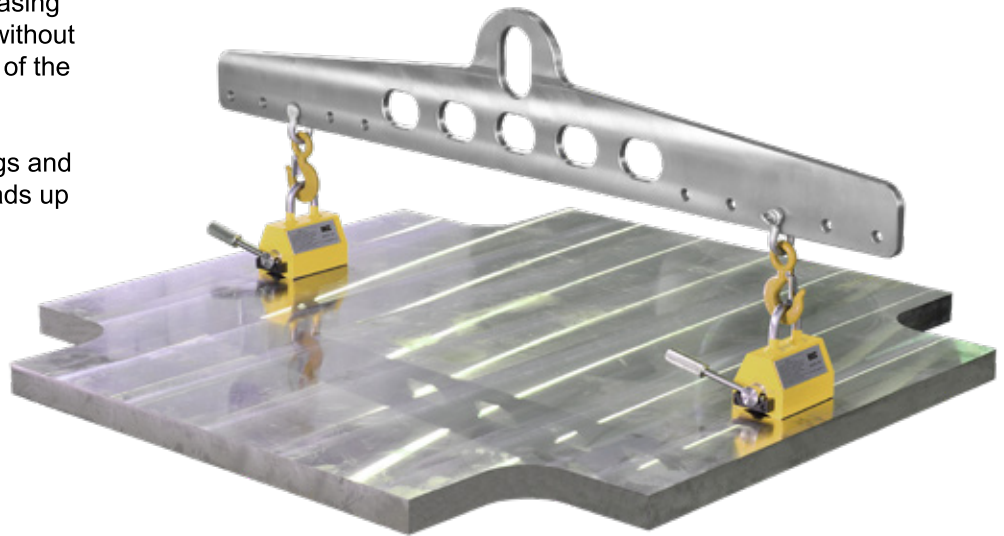


# BLM

## SAFER FIXED BEAM

The BLM spreader beam allows for the mounting of 2 SAFER lifters increasing the load handling characteristics without complicating the overall simplicity of the process.

BLM-1 handles loads up to 960 kgs and 3000mm while BLM-2 handles loads up to 1920kg and 3000mm in length.



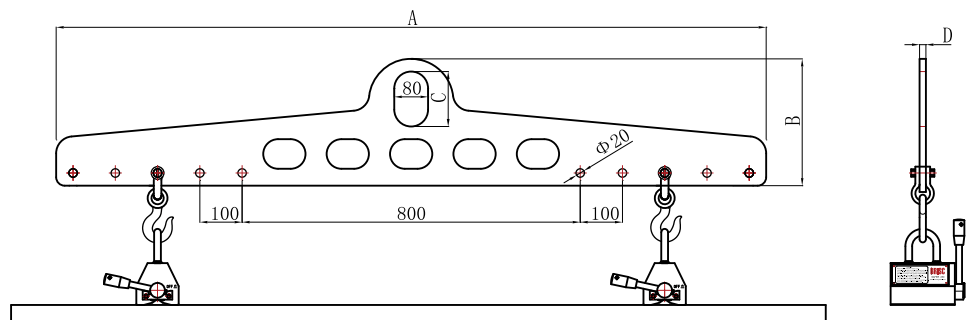
### Dimensions mm(inch)

#### BLM-1

A	1680 (66.14)
B	300 (11.81)
C	130 (5.12)
D	15 (0.59)
Weight	37 kg/81.4 lbs

#### BLM-2

A	1900 (74.80)
B	415 (16.34)
C	160 (6.30)
D	20 (0.79)
Weight	75 kg/165 lbs



### Load Capabilities mm(inch)

#### BLM-1

in combination with:	Load	Plates		Rounds	
		Max Length	Max Width	Load	Max Length
2 x SAFER-150	240 kg/528 lbs	1525 (60)	1015 (40)	100 kg/440 lbs	1525 (60)
2 x SAFER-300	480 kg/990 lbs	3050 (120)	1525 (60)	200 kg/440 lbs	3050 (120)
2 x SAFER-600	960 kg/2112 lbs	3050 (120)	1525 (60)	400 kg/880 lbs	3050 (120)

#### BLM-2

in combination with:	Load	Plates		Rounds	
		Max Length	Max Width	Load	Max Length
2 x SAFER-600	960 kg/2112 lbs	3050 (120)	1525 (60)	400 kg/880 lbs	3050 (120)
2 x SAFER-1200	1920 kg/4224 lbs	3050 (120)	1525 (60)	750 kg/1650 lbs	3050 (120)